



Packaged Polyethylene Pump Stations

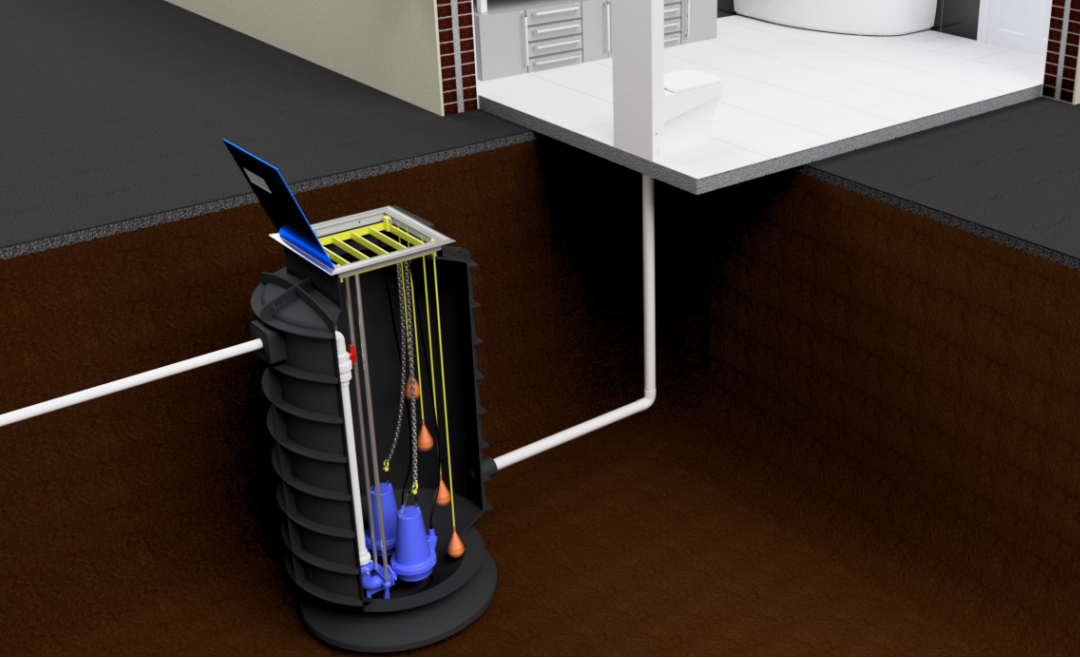


✓ Engineered

✓ Tough

✓ Easy

Working with you.



SEWAGE



RAINWATER



TRADE WASTE



WASTEWATER



STORMWATER



GREYWATER

PACKAGED PUMPING STATIONS

The Netco range of Polyethylene Packaged Pumping Stations are a convenient, high quality and reliable solution for any liquid pumping application. With a specific focus on reducing work onsite and installation timeframes, each pump station is supplied as a complete, factory assembled package with pumps, pipework and electrical controls, purpose-selected to meet specific site requirements.

ADVANTAGES

**Lightweight,
yet tough.**

Manufactured from roto-moulded, medium-density polyethylene.

**One-piece
construction.**

No on-site sealing or jointing.

**Smooth
inner
surfaces.**

Inhibits bacterial growth, very easy to clean.

**Safer for
workmen.**

No confined space entry.

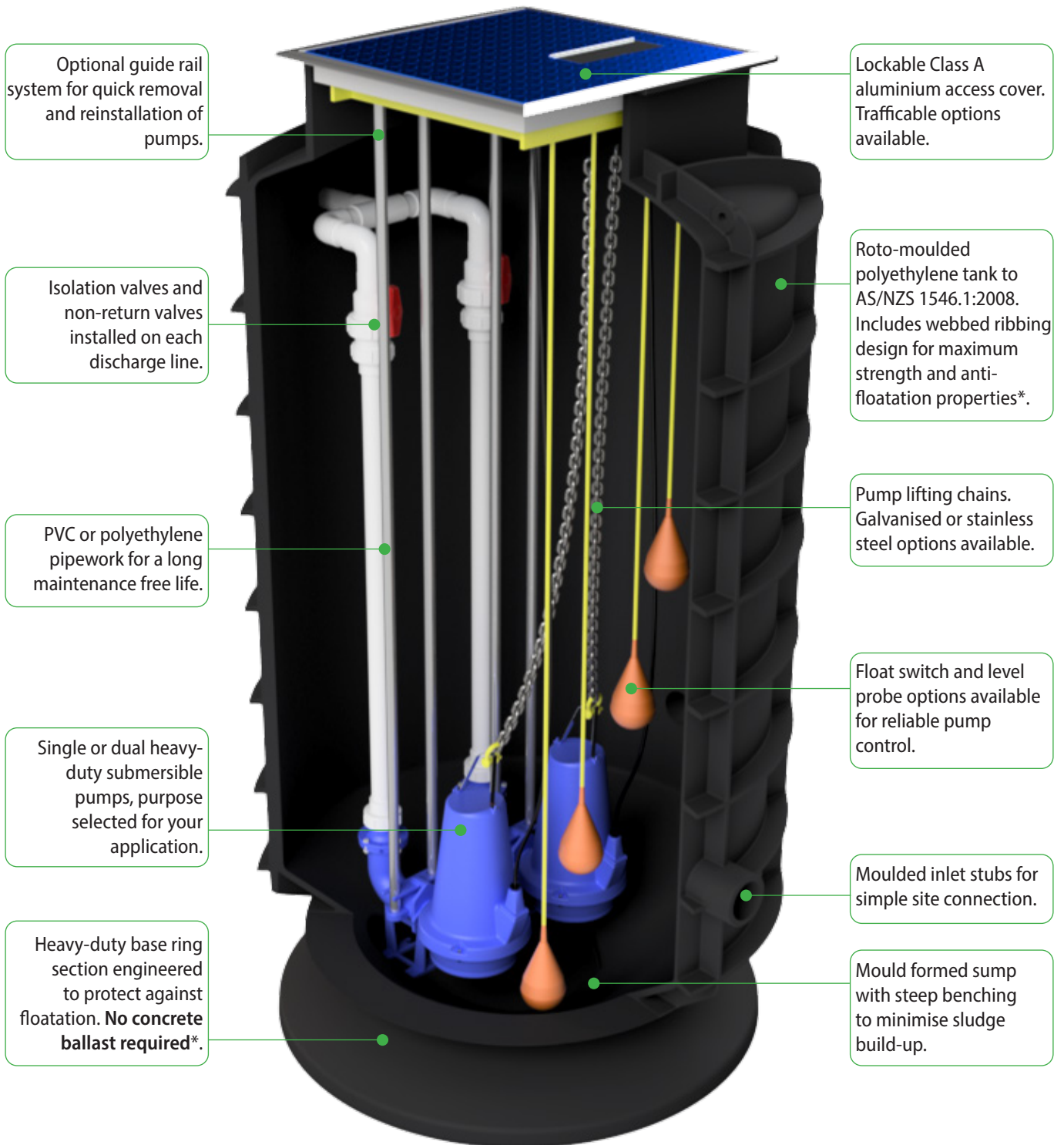
Engineered

To AS/NZS
1546.1:2008.

**Packaged
Solution**

For quick & easy site
installation

FEATURES



*Models NPE-800, NPE-1200 & NPE-1600 only.

SPECIFICATIONS

Netco Polyethylene Packaged Pump Stations are available in standard sizes from 100L up to 6000L capacity. Custom-size Pump Stations are also available, and we offer complimentary site visits to measure up and ensure our clients get exactly what they need.

Model	External Diameter	Nominal Depth	Nominal Volume
NPE-100	590mm	700mm	100L
NPE-250	730mm	900mm	250L
NPE-800	1200mm	1300mm	800L
NPE-1200	1200mm	1720mm	1200L
NPE-1600	1200mm	2160mm	1600L
NPE-2000	1300mm	2050mm	2000L
NPE-2400	1300mm	2450mm	2400L
NPE-3000	1600mm	2030mm	3000L
NPE-4000	1600mm	2430mm	4000L
NPE-5000	1600mm	3230mm	5000L
NPE-6000	1600mm	3630mm	6000L

CONTROL SYSTEMS



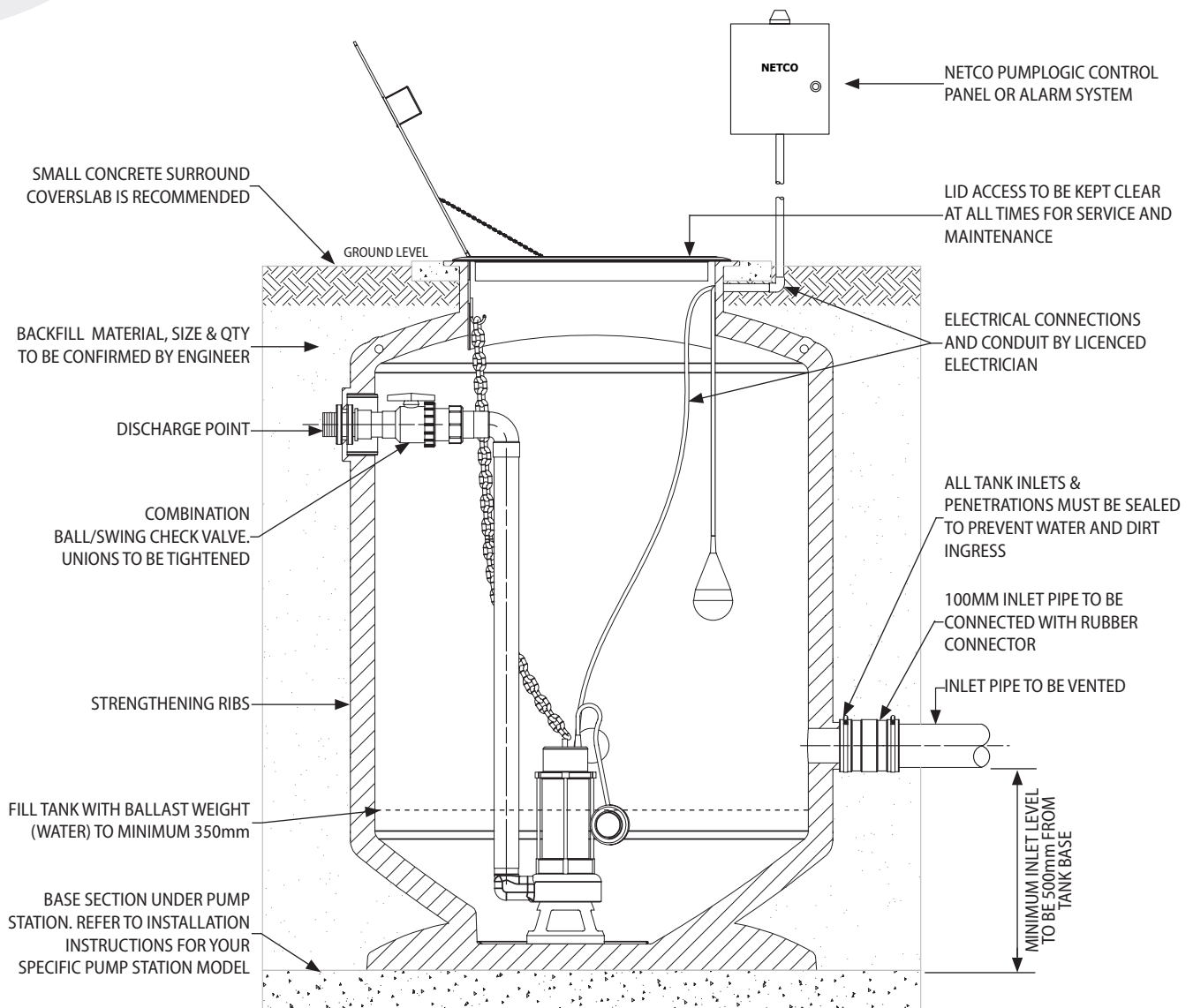
Netco offers a wide range of pump station control systems, from simple float switch control through to sophisticated remote monitoring and operation. We work with you to provide the exact control system to meet your specific site requirements.

ACCESS COVERS



Netco offers a wide range of access covers to suit various loading requirements. Options include aluminium, GATIC, grated, concrete infill and decorative-edge covers. We work with you to provide an access cover solutions to meet your specific site requirements.

TYPICAL INSTALLATION DRAWING



INSTALLATION NOTES

1. Excavate the installation site to a depth 100mm greater than the overall pump chamber height.
2. Fill the base section under the pump station. Refer to installation instructions for your specific pump station model.
3. Place the pump chamber and fill with 300mm - 400mm water.
4. Confirm with site engineer regarding backfill requirements.
5. Electrician to install conduit(s) for the pump(s) through wall using plain to screwed adaptors. Seal cables on inside of conduits. Ensure adequate power supply.
6. Set high level alarm float switch 100mm above pump start float switch.
7. Vent penetrations and inlet penetrations to be made on site and sealed through inlet stub or via rubber connection through the chamber wall using a multi-seal or similar. Vent to be as close as possible to the top of the chamber. All penetrations to be perpendicular to the chamber wall.
8. When commissioning, set overloads to amperage shown on pump nameplate.
9. Pump chamber is to be regularly cleaned with a handheld hose, and pump and alarm operation checked. In sewage or high grease applications, the chamber should be degreased on a regular basis by waste removal contractor. Pump(s) should be removed for service on a 12 monthly cycle (approximately).
10. This diagram is typical only. Refer to installation instructions specific to your pump station model. Full installation guidelines are available for download at www.netcopumps.com.au.



Hobart

100 Sunderland St
Derwent Park TAS 7009

Ph: 1300 301 664

Burnie

16-18 Wellington St
South Burnie TAS 7320

Ph: 1300 301 664

PO Box 800
Moonah TAS 7009

